

FEDERAL BUREAU OF INVESTIGATION
FOI/PA
DELETED PAGE INFORMATION SHEET
FOI/PA# 1193642-0

Total Deleted Page(s) = 3
Page 23 ~ Duplicate - 1193642-0 NGI-FACE Report Card/MOU Pg. 82;
Page 24 ~ Duplicate - 1193642-0 NGI-FACE Report Card/MOU Pg. 83;
Page 25 ~ Duplicate - 1193642-0 NGI-FACE Report Card/MOU Pg. 92;

```
XXXXXXXXXXXXXXXXXXXXXXXXXXXXX  
X Deleted Page(s) X  
X No Duplication Fee X  
X For this Page X  
XXXXXXXXXXXXXXXXXXXXXXXXXXXXX
```

HOW TO CAPTURE HIGH QUALITY FACE IMAGES

FRONTAL IMAGES



Good

- ✓ The subject faces and looks straight at the camera.
- ✓ Camera is positioned level with the subject's eyes.



Yaw

Check for symmetric visibility of subject's nose, ears, and jawline.



Roll

Check that the eyes are level horizontally.

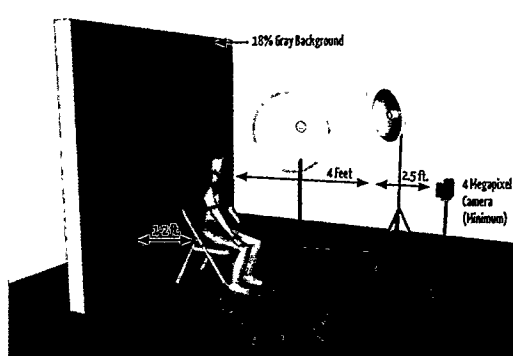


Pitch

Check that neither the chin nor the forehead are tilted forward.

Always take at least one frontal with no observable angles

IDEAL ENVIRONMENT



Use Appropriate Equipment

Use a DSLR (Digital Single Lens Reflex) camera or a point and shoot with manual exposure override features.

Use a camera with four megapixels or higher effective image resolution.

Ensure the focal length, shutter speed, and ISO are appropriate for the photographic environment — always look at the resulting images!

ILLUMINATION



Good

- ✓ Provide even illumination and a plain, neutral gray background.



Harsh Light

Avoid harsh lights that cause hotspots and saturation.



Uneven Light

Avoid uneven lighting that causes dark shadows.



Interference

Avoid blur, glare, reflections, and interference from backlight.

Ensure proper illumination and correct exposure



INCLUDE PROFILES, ANGLES, AND SCARS, MARKS, & TATTOOS. SUBJECTS WITH GLASSES SHOULD HAVE ONE IMAGE WITH AND WITHOUT GLASSES.

COMPOSITION



Neutral Face

- ✓ Ensure that the subject presents a neutral expression with mouth closed.



No Smiling

Avoid smiles.

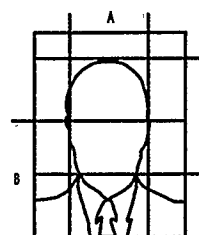


No Faces

Avoid extreme expressions.

Ensure correct composition and neutral expression

COMPOSITION GRID



Face width (A) and height (C) should each be about 50-60% of the height and width of the photo image.

Eyes should be about 50-70% of the distance from the bottom of the image (B).

FOR ADDITIONAL INFORMATION ON RECOMMENDED PRACTICES FOR FACE IMAGES, REFER TO THE LATEST VERSION OF THE ANSI/ITL DATA FORMAT FOR THE INTERCHANGE OF FINGERPRINT, FACIAL, AND OTHER BIOMETRIC INFORMATION.

NGI-ITU

NGI-ITU

Welcome [redacted]

b6

b7C



1. This Site: NGI-ITU

This Site: NGI-ITU

NGI-ITU | RISC | Palms | Latent | Face/Photo | SMT | Iris | Fingerprint Stats | Rap Back Information | Regional Rep Map

Site Actions ▾

NGI-ITU > Communication > Facial Pilot, RISC, EBTS Survey
Communication: Facial Pilot, RISC, EBTS Survey

Close

New Item | Edit Item | Delete Item | Manage Permissions | Alert Me

State New Mexico

Region Western

b6

b7C

Contact Name [redacted]

Subject Facial Pilot, RISC, EBTS Survey

Category Information Gathering; RISC; Photo; EBTS Survey

Details

b5

b6

b7C

Report Name

Contact Card

Created at 1/20/2012 9:32 AM by [redacted] b6

Last modified at 1/20/2012 9:32 AM by [redacted] b7C

Close

OmniNet Web Portal brought to you by the Technology Integration & Support Unit. For technical support, please call the CJIS Division help desk at [redacted]

b7E